



## **Bringing Theory to Practice Project 4<sup>th</sup> National Working Conference**

**January 18-19, 2007**

**Sheraton New Orleans Hotel, New Orleans, LA**

### **PROGRAM**

*Thank you for participating in the 4th National Bringing Theory to Practice Project Working Conference.*

*The 2007 BTtoP Working Conference will feature the results of three years of research, including the work at seven demonstration sites and nearly forty campus-initiated projects, regarding the outcomes of engaged learning that are linked to students' academic experience, their well-being and their civic development. The evidence gained supports initial learnings, promising practices now in the field, and the emerging agenda regarding what next needs to be examined.*

*We will be exploring "Campus Life and Student Culture" and the perceived disconnect between what students actually experience and what we in the academy claim they experience, as well as "Student Mental Health and the Boundaries of Professional and Institutional Responsibility and Liability", featuring both professional and legal perspectives.*

*You have been invited to the 4<sup>th</sup> National Working Conference, representing over 200 colleges and universities. As participants, you are being asked to stay connected to the Project, sharing the nature and achievements of your own programs and using the tools and evidence presented at the Conference to support your work. Opportunities for interaction and involved discussion are a great part of the Working Conference and we welcome your full involvement and encourage you to take full advantage of the resources available.*

*Welcome to the Conference.*

### **Conference Sponsor**

**The Charles Engelhard Foundation** is a New York-based foundation whose mission focuses on projects in higher and secondary education, cultural, medical, religious, wildlife, and conservation organizations.

# Thursday, January 18, 2007

<b>Rhythm Ballroom 1</b>	<b>11:00 am</b>	<b>Registration (lobby)</b>
<b>Rhythm Ballroom 1</b>	<b>12:00 pm</b>	<b>Welcome &amp; Plenary Luncheon</b> <i>Sally Engelhard Pingree, Trustee, The Charles Engelhard Foundation</i> <i>Donald W. Harward, Director, BTtoP Project</i>
<b>Waterbury Ballroom</b>	<b>1:30 pm</b>	<b>Session II “BTtoP Research: What Has Been Learned”</b> <i>Barry Checkoway, University of Michigan</i> <i>Ashley Finley, Dickinson College</i> <i>Joan Riley, Georgetown University</i>
<b>Waterbury Ballroom</b>	<b>2:45 pm</b>	<b>“Café du Monde” Refreshment Break</b>
<b>Rhythm Ballrooms 2&amp;3</b>	<b>3:00 pm</b>	<b>Session III “Presentations from the Field: Demonstration Sites”</b>
<b>(Rhythm Room 2)</b>		<i>Ron Flores, St. Lawrence University</i> <i>Marjorie Silverman, Barnard College</i> Moderated by John Ford, Emory University
<b>(Rhythm Room 3)</b>		<i>Dessa Bergen-Cico, Syracuse University</i> <i>Arri Eisen, Emory University</i> <i>Pamela Scott-Johnson, Morgan State University</i> Moderated by Hara Marano, <i>Psychology Today</i>
<b>Waterbury Ballroom</b>	<b>4:15 pm</b>	<b>Session IV “Campus Life and Culture”</b> <i>Helen Horowitz, Smith College</i> <i>Alexandra Robbins, author</i> Moderated by Joyce Bylander, Dickinson College
<b>(Conference attendees dinner on own)</b>		
	<b>6:15 pm</b>	<b>Dinner Mtg. BTtoP Advisory Board</b>

# Friday, January 19, 2007

<b>Waterbury Ballroom</b>	<b>7:30 am</b>	<b>“Fat Tuesday” Continental Breakfast available</b>
<b>Waterbury Ballroom</b>	<b>8:15 am</b>	<b>Session V “Student Mental Health: Boundaries of Professional and Institutional Responsibility and Liability”</b> <i>Paul Joffe, University of Illinois at Urbana-Champaign</i> <i>Daniel Silverman, Princeton University</i> Moderated by Bernie Arons, National Development & Research Institutes
<b>Waterbury Ballroom</b>	<b>9:30 am</b>	<b>Refreshment Break</b>
<b>Rhythm Ballroom 1</b>	<b>9:45 am</b>	<b>Session VI “Campus Life and Culture: Student Perspectives of Connects and Disconnects”</b> <i>Alexandra Bigler, Gettysburg College</i> <i>Elizabeth Christensen, Concordia College-Moorhead, MN</i> <i>Eddie Sumlin, The Evergreen State College</i> Moderated by Libby Huffman-Wilkinson, BTtoP Advisory Board
<b>Rhythm Ballroom 1</b>	<b>11:00 am</b>	<b>Session VII “Programmatic Projects from the Field”</b> <i>Phyllis Lane, Kandi Bauman, Evergreen State College</i> <i>Michelle Lelwica, Concordia College-Moorhead</i> <i>Jim Tweedy, University of Delaware</i> Moderated by Dessa Bergen-Cico, Syracuse University
<b>Waterbury Ballroom</b>	<b>12:30 pm</b>	<b>Luncheon</b>
<b>Grand Ballroom A (5<sup>th</sup> Floor)</b>	<b>1:30 pm</b>	<b>Overview Presentation to AAC&amp;U audience not attending BTtoP Conference: Introduction and current status report “Countering Students’ Dangerous Disengagement”</b>
<b>Waterbury Ballroom</b>	<b>2:45 pm</b>	<b>Session VIII “Pedagogies of Engagement and Civic Outcomes”</b> <i>Ron Flores, St. Lawrence University</i> <i>Sylvia Hurtado, UCLA</i> <i>David Scobey, Bates College</i> Moderated by Caryn McTighe Musil, AAC&U
<b>Waterbury Ballroom</b>	<b>3:45 pm</b>	<b>“Southern Splendor” Refreshment Break</b>

<b>Waterbury Ballroom</b>	<b>4:00 pm</b>	<b>Session IX BTtoP “Campus Research Projects: Achievements and Barriers”</b> <i>Kathy Low, Bates College</i> <i>Dana Natale, Courtney Hopkins, Montclair State University</i> Moderated by Shalom Staub, Dickinson College <b>Announcement of RFP for new rounds of support.</b>
<b>Rhythm Ballroom 3</b>	<b>5:15 pm</b>	<b>Reception for BTtoP Conferees</b>

## Bringing Theory to Practice Advisory Board

**Bringing Theory to Practice extends a special thanks to our Advisory Board Members who contributed their time and expertise to help shape our Project and Conference.**

Bernard S. Arons  
Executive Director and  
CEO  
National Development and  
Research Institutes, Inc.

Dessa Bergen-Cico  
Associate Dean of Students  
Syracuse University

Jenny Blau  
Congressional Health Fellow  
U.S. House of Representatives

Robert Wm. Blum  
William H. Gates Sr. Professor  
and Chair  
Johns Hopkins University,  
Bloomberg School of Public  
Health

Thomas Bornemann  
Director, Mental Health  
Program  
The Carter Center

Joyce A. Bylander  
Associate Provost for Campus  
Academic Life  
Dickinson College

Barry Checkoway  
Professor of Social Work and  
Urban Planning  
Founding Director of the  
Ginsberg Center  
University of Michigan

Laurie Davidson  
Associate Director, Center for  
College Health  
and Safety, Education  
Development Center, Inc.

Mary Jane England  
President  
Regis College

John L. Ford  
Senior Vice President & Dean of  
Campus Life  
Professor of Public Health  
Emory University

Susan E. Foster  
Vice President and Director,  
Policy Research and Analysis  
The National Center on  
Addiction and Substance Abuse  
Columbia University

Stephanie A. Gordon  
Director of Educational  
Programs  
NASPA - Student Affairs  
Administrators in Higher  
Education

Donald W. Harward  
Senior Fellow  
Association of American  
Colleges and Universities

Richard H. Hersh  
Senior Fellow  
Council for Aid to Education

Rebecca Herzig  
Associate Professor, Women and  
Gender Studies  
Bates College

Elizabeth Huffman-Wilkinson  
Legislative Fellow for  
Representative Doris O.  
Matsui (D-CA)

Alison K. Malmon  
Founder and Executive Director  
Active Minds, Inc.

Hara Estroff Marano  
Editor-At-Large  
Psychology Today

Jonathan M. Metzler  
Associate Professor of Psychiatry  
and Women's Studies  
Director, Program in Culture,  
Health, and Medicine  
University of Michigan

Caryn McTighe Musil  
Senior Vice President, Diversity,  
Equity, and Global Initiatives  
Association of American  
Colleges and Universities

Sally E. Pingree  
Trustee  
Charles Engelhard Foundatio

Daniel Tad Roach  
Headmaster  
St. Andrew's School

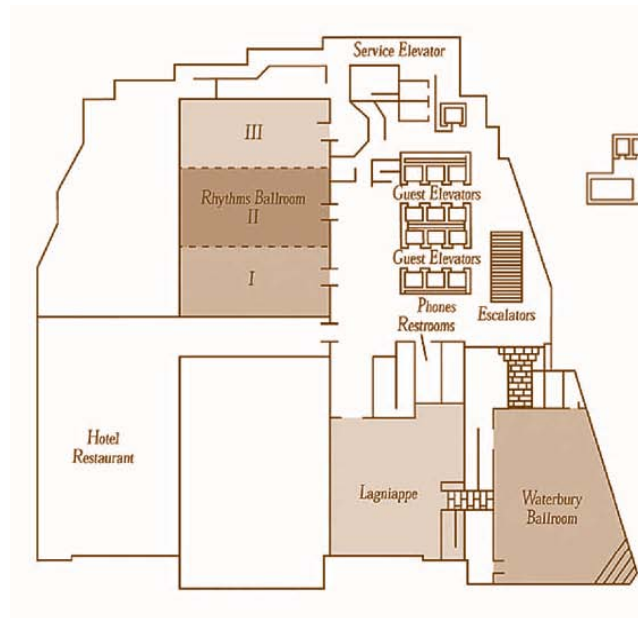
William S. Speers  
Dean of Faculty  
St. Andrew's School

Lynn Swaner  
Assistant Professor  
C.W. Post of Long Island  
University

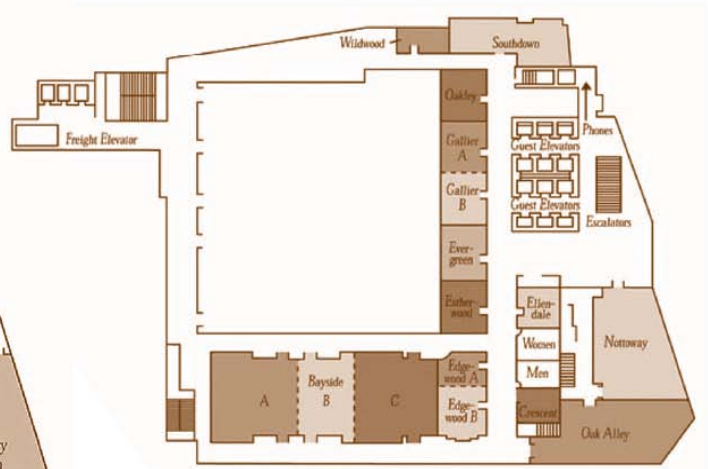
Jennifer O'Brien  
Program Associate  
Bringing Theory to Practice  
Project



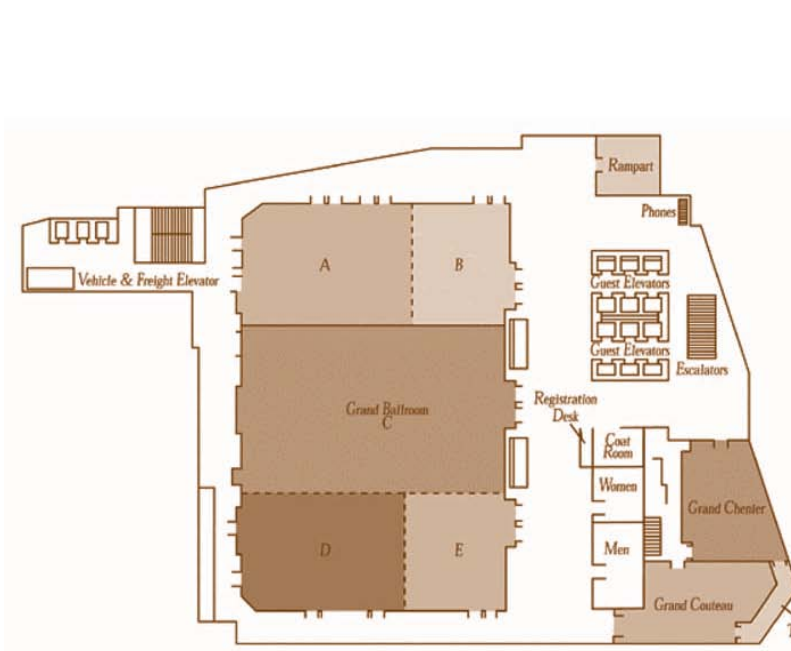
# Sheraton Hotel New Orleans



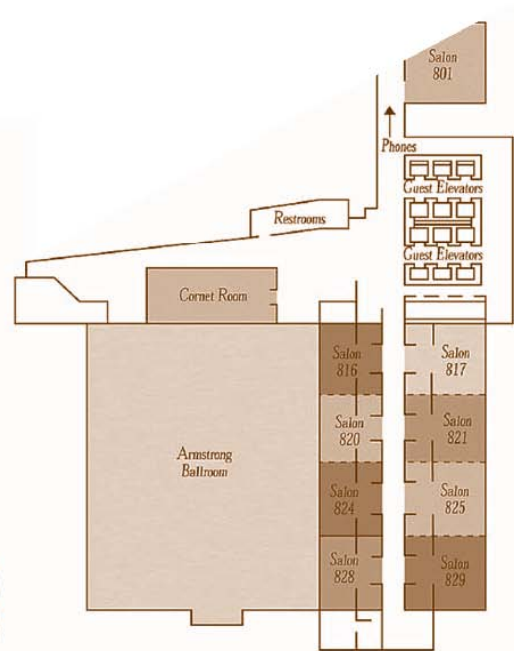
**SECOND FLOOR (BTtoP Sessions)**



**FOURTH FLOOR**



**FIFTH FLOOR**



**EIGHTH FLOOR**